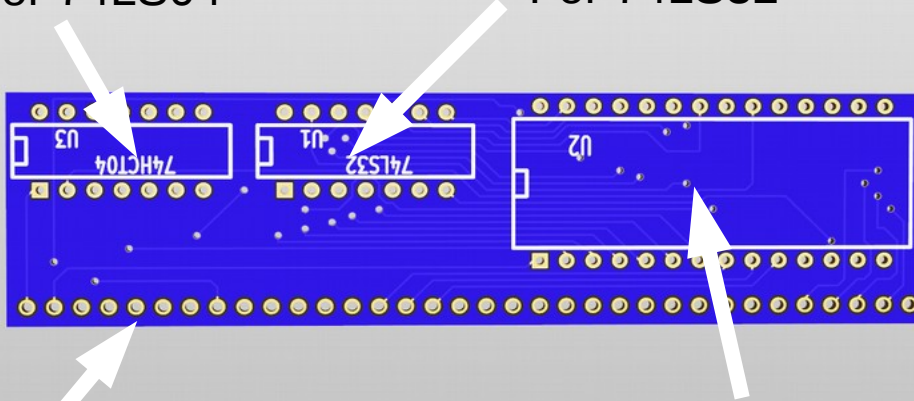


Z8014

14 pin dip socket **RAM** 14 pin dip socket
 For 74LS04 For 74LS32



36 pin right angle header

28 pin dip socket
 For 62256 RAM

This is the easiest of the boards to solder.

Pro tip: Tack 2 opposite corners of the chip sockets with a little bit of solder first of all. Then check they are lying flush with the PCB before doing the rest of the pins.

