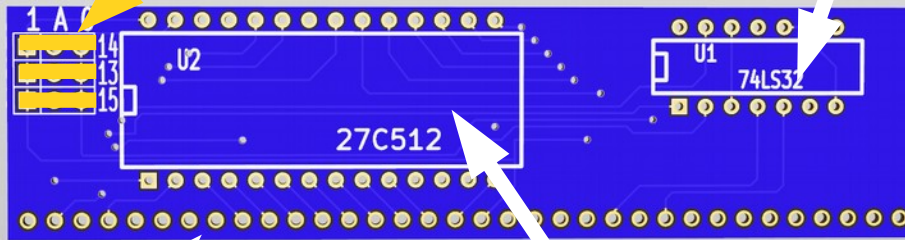


# R2014

3 x 3 pin header  
3 x Jumpers from A to 0

**ROM** 14 pin dip socket  
For 74LS32



36 pin right angle header

28 pin dip socket  
For 27C512 ROM

3 pin headers should be fitted horizontally as indicated.

Jumpers across these select which 8k bank of the ROM is used. For BASIC, use jumpers between A and 0 on each one.

**Pro tip:** To keep them spaced evenly, use jumpers vertically between headers when soldering

