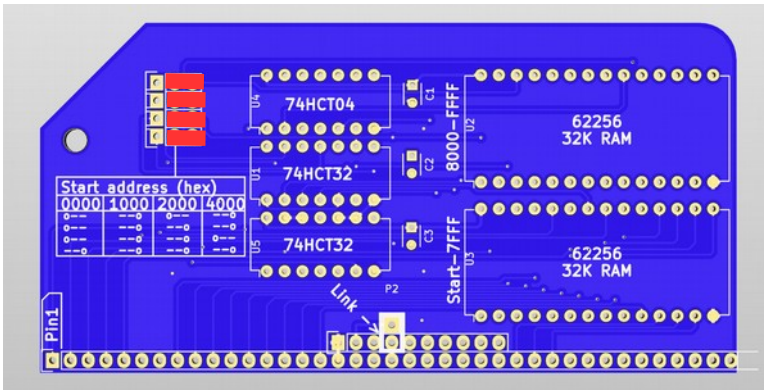


RC2014

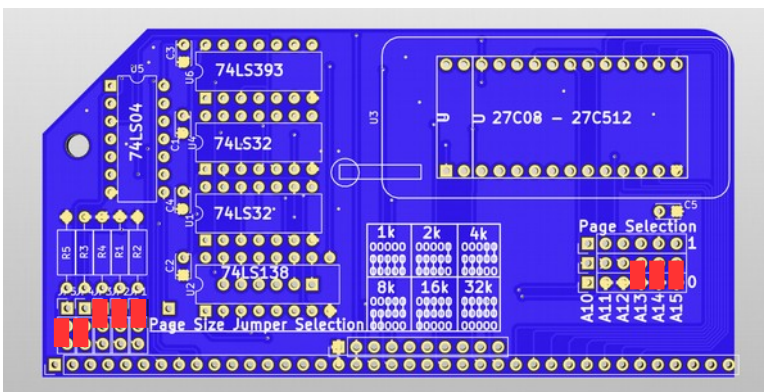
RC2014 Pro Jumper Settings – 32k BASIC



64k RAM Module

Use double header pins on this module
All four jumpers to right hand setting. Top 3 jumpers set start address to 0x0000. However, because bottom jumper sets lower 32k to be paged in or out from Pageable ROM board, lower 32k will not be enabled under BASIC

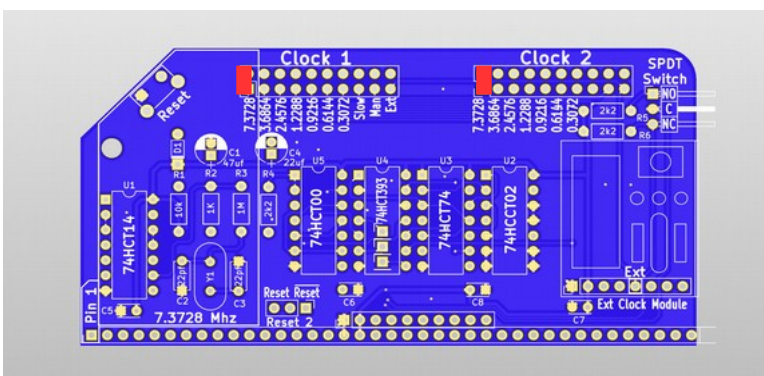
Do not solder a link where it says Link-->



Pageable ROM Module

Use double header pins on this module
Page Size (Lower, Lower, High, High, High) sets page size to 8k

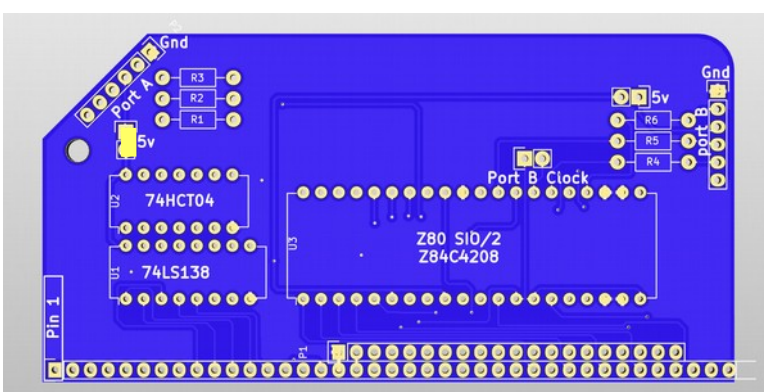
Page Selection (None, None, None, Lower, Lower, Lower) sets the 8k page to start at 0x0000 on the 64k ROM



Dual Clock Module

Use double header pins on this module
Clock 1 – 7.3278 Mhz. This sets the CPU frequency to 7.3278Mhz and Serial Port A to 115,200bps

Clock 2 – 7.3278 Mhz. This sets Serial Port B to 115,200bps. Use other positions for different baud rates



Dual Serial SIO/2 Module

Use double header pins on this module
5v jumper(s) optional if using FTDI cable to power RC2014. If RC2014 is powered from backplane, do not connect jumper.

Do not connect Port B Clock jumper as this is driven from Dual Clock Module.